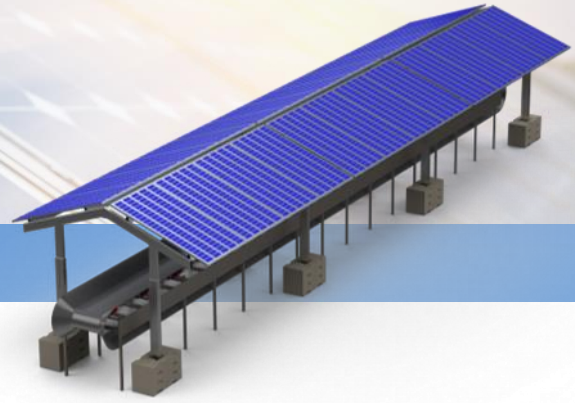




Customize



Photovoltaic roofing for conveyor belts

System

The conveyor belt photovoltaic system makes it possible to generate solar energy without having to designate additional space: The PV modules are mounted directly to the existing structure of the conveyor belt by means of a robust aluminum construction. Thus, the system can be set up and put into operation quickly and easily.

Applications

Conveyor belts

The standard solution is suitable for commercially available conveyor belts up to a conveyor belt height of 2.50 m. Deviations from the standard can be accommodated by special design solutions.



Advantages

High economic efficiency: Direct feed at the conveyor belts without loss of power

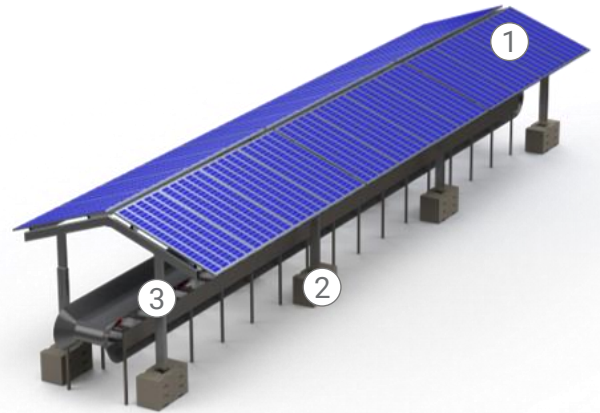
Dual use: No additional land needed to generate green electricity



Conveyor belts

Construction

- ① **Highest quality photovoltaic modules**
Monocrystalline HJT module
- ② **Concrete weight** : No requirements for the subsoil condition
- ③ **Sturdy aluminum construction** allows for easy transport and quick assembly



Key figures



0,987 kW_p/m length-specific



5,77 m Length of segment
various Conveyor belt heights and widths possible



Wind load: 27,5 m/s (WLZ3)
Snow load: 2,06kN/m² (SLZ2 600 MASL)

